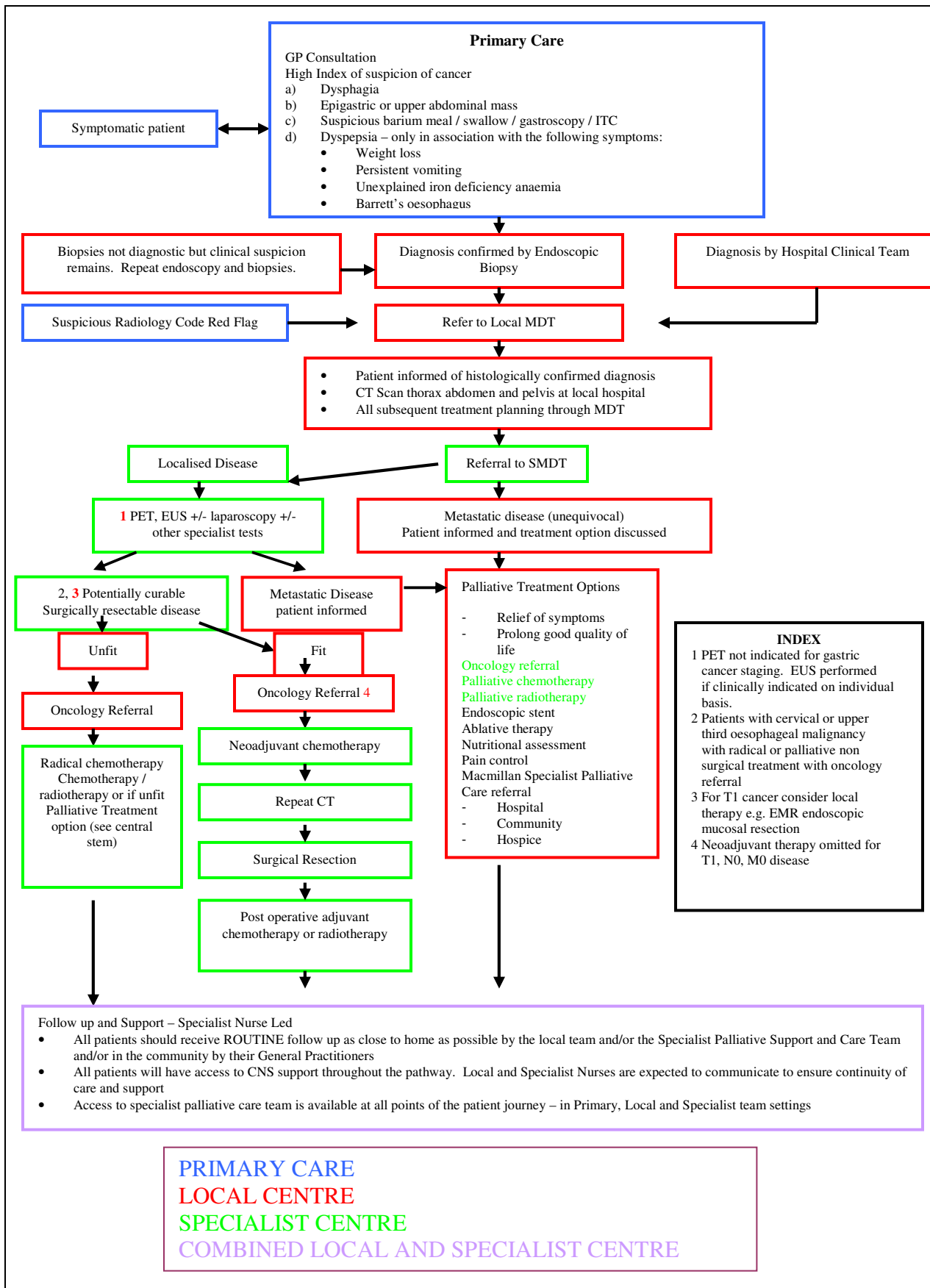


Oesophago-Gastric Cancer Pathways 62 day target for patients referred as suspected cancer

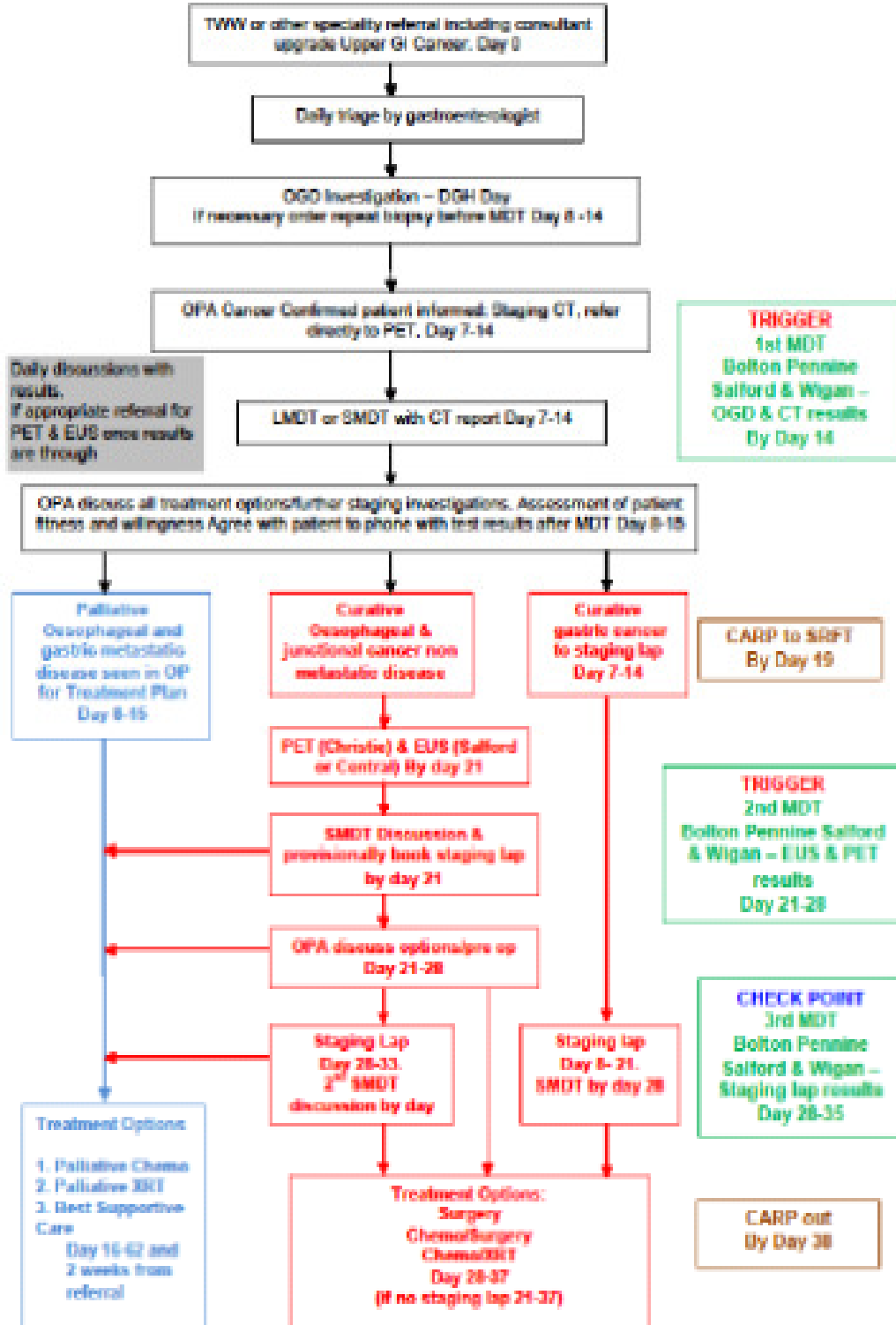
During 2012 each of the three OG SMDTs in the Network have agreed a revised timed 62-day pathway. There are no changes to the clinical management pathway and this remains common across all three of the 62-day pathways (see Appendix 4a). These revised pathways reflect the timescales described in the Network Breach Reallocation Policy and how each of the organisations delivering elements of the pathway from initial referral, through the diagnostic phase to the point of first definitive treatment will work together.

Appendix 4a : Clinical Management Pathway for Oesophago-Gastric Cancer



Appendix 4b: SRFT SMDT 62 Day Pathway

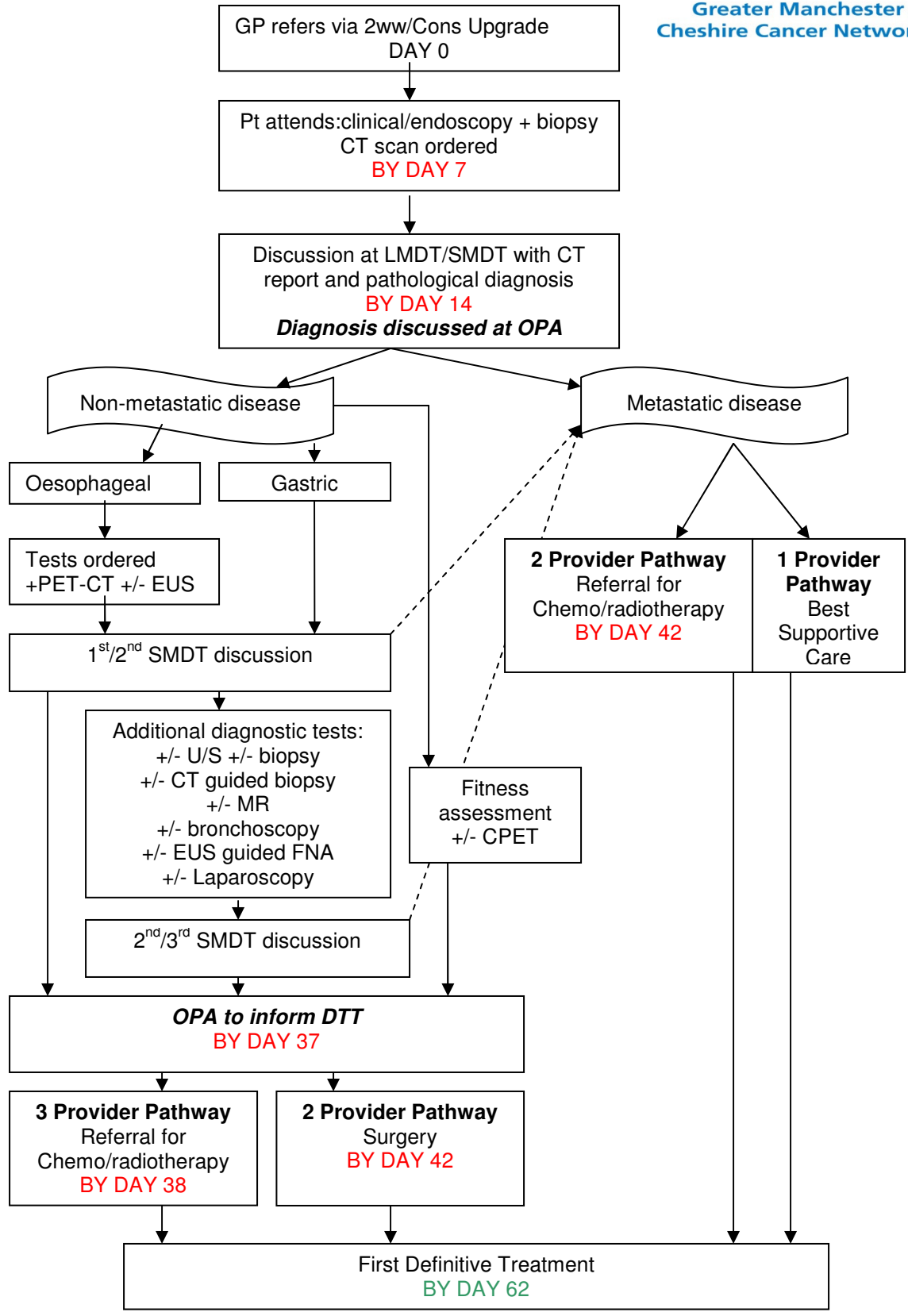
SRFT SMDT North Sector Upper GI 62 Day Pathway[®]



Appendix 4c : CMFT SMDT 62 Day Pathway



Greater Manchester & Cheshire Cancer Network



Appendix 4d: UHSM SMDT 62 Day Pathway

