

PRIMARY CARE REFERRAL PATHWAYS FOR PATIENTS WITH THYROID DISEASE

Introduction

The Cancer Network requires that a structured and clear referral pathway for patients with a potential diagnosis of thyroid cancer should be formulated and, once agreed amongst relevant stakeholders, be adopted throughout the network.

Professions involved

Many differing groups of clinicians are involved in the care of patients with thyroid diseases. Each hospital will have its own configuration of team members within the thyroid team and this may include any combination of Medical Endocrinologists, Ear Nose & Throat Surgeons, Endocrine Surgeons, Clinical or Medical Oncologists, Radiologists, Pathologists and Cytologists.

Primary care colleagues should refer thyroid patients to the thyroid service at the preferred local hospital. Secondary care should organise the service such that patients are appropriately streamed to medical or surgical colleagues as indicated by the symptoms on the referral proforma.

Service Configuration

Patients with benign thyroid disease are managed by the appropriate members of the thyroid service in each hospital. Patients with malignant thyroid disease should be under the care of core members of the Thyroid Cancer MDT, either from the point of referral (HSC205 referral) or once the diagnosis of thyroid cancer is suspected or established (radiologically, cytologically or histologically). Such patients will have their resections performed by a core member of the MDT. All patients with an established diagnosis of thyroid malignancy should be discussed pre and postoperatively at the regional thyroid cancer MDT. Patients with confirmed thyroid malignancy requiring further surgery (completion thyroidectomy or lateral neck dissection) will have this performed by a core member of the MDT. Patients can be referred across trusts to maintain services within the core group of designated surgeons in times of absence.

The Thyroid Cancer MDT

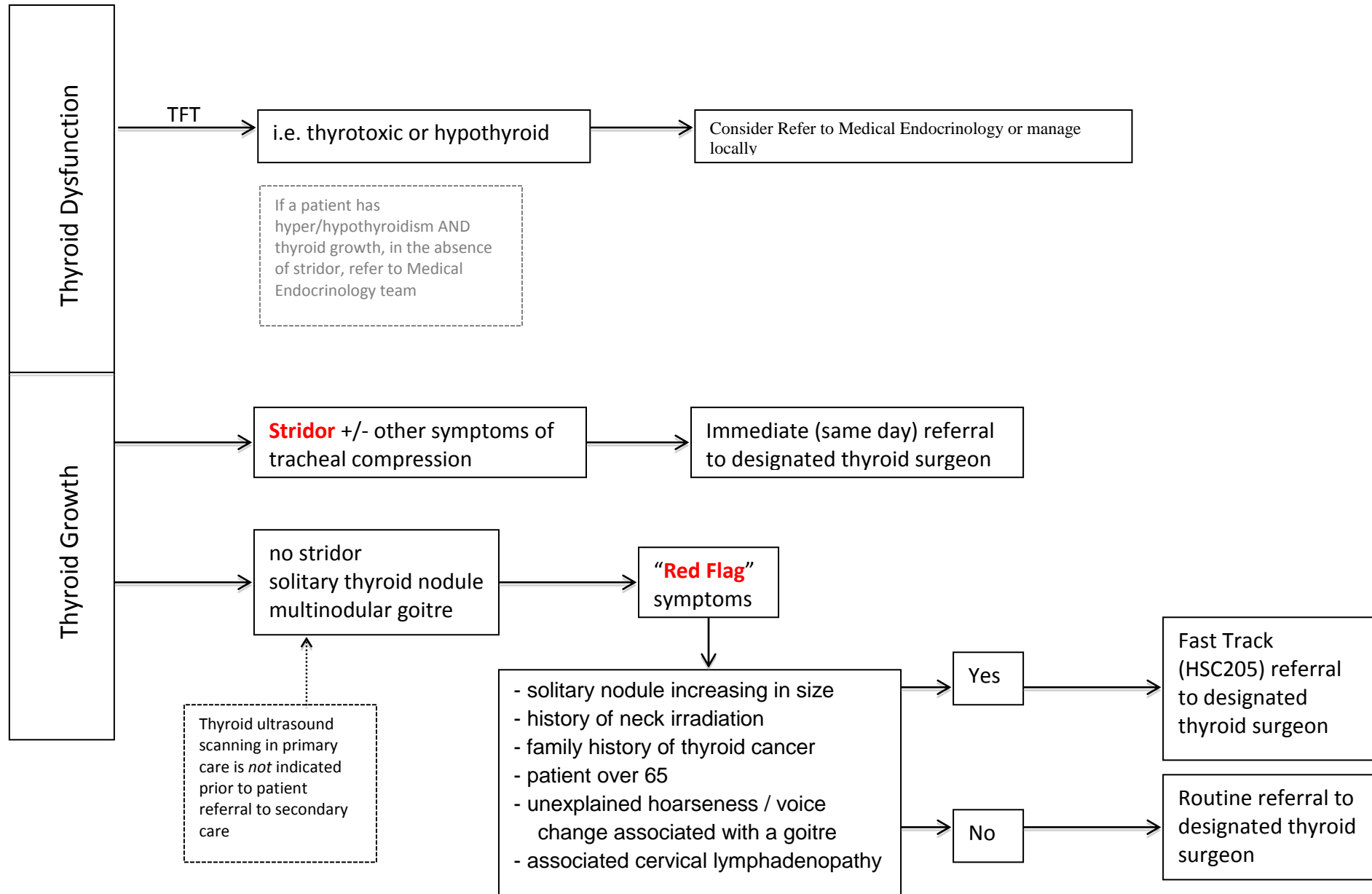
The Greater Manchester & Cheshire Thyroid Cancer MDT is hosted by Christie Hospital. It is held every alternate week on Thursdays between 4.30 and 6pm and is chaired by Dr Yap, Consultant Oncologist.

Core members of the MDT (listed in the table below) are required to attend a minimum of 66% of MDT meetings per annum either in person or via video-link. Thyroid cancer cases are discussed preoperatively to ascertain the appropriate surgical treatment and following surgery to discuss completion surgery or adjuvant therapy.

Clinical sub-group

The thyroid cancer MDT is part of the Head & Neck Subgroup of the Greater Manchester & Cheshire Cancer Network. As such it reports to the Chair of the Subgroup and has representation at its quarterly meetings.

Primary Care Referral Pathway for Patients with Thyroid Symptoms



Designated Thyroid Surgeon List

Hospital	Name of Trust <i>alphabetical order</i>	Designated Thyroid Surgeons <i>alphabetical order</i>	Referral Contact Point
Manchester Royal Infirmary	†Central Manchester Hospitals University NHS Foundation Trust	Mr J Homer ENT Surgeon* Mr S Loughran ENT Surgeon* Mr N Parrot Transplant & Endocrine Surgeon*	RBMS Fax: 0161 276 8756 Email: cmm-tr.cancer-referrals-cmft@nhs.net
Macclesfield Hospital	East Cheshire NHS Trust	Mr M Khan ENT Surgeon	Via Choose and Book or Fax: 01625 661 027
Leighton Hospital	Mid Cheshire Hospitals NHS Foundation Trust	Miss A Dingle ENT Surgeon ‡	Via Choose and Book or via electronic referral to urgent.cancer@mcht.nhs.uk or fax: 01270 612 545
North Manchester General Hospital	†Pennine Acute Hospitals NHS Trust	Mr P Murthy ENT Surgeon*	Manchester Integrated Care Gateway Tel: 0161 443 0631 Fax: 0161 443 0632 Bury RBMS Tel: 0161 762 3155 Fax: 0161 762 3078 Oldham Referral Information Centre Tel: 0161 627 7490 Fax: 0161 785 0421 Heywood and Middleton RBMS Tel: 0161 655 1544 Fax: 0161 655 1592
Oldham Royal Hospital		Refer to North Manchester Gen Hospital or Fairfield General Hospital	
Fairfield General Hospital		Mr I Shepherd ENT Surgeon*	
Rochdale Infirmary		Refer to North Manchester Gen Hospital or Fairfield General Hospital	
Royal Bolton Hospital	Royal Bolton Hospital NHS Foundation Trust	Mr S Hargreaves ENT Surgeon* Mr N Umapathy ENT Surgeon	TAC Tel: 01204 390400 Fax: 01204 390463

Salford Royal Hospital	Salford Royal Hospitals NHS Foundation Trust	Miss H Doran Endocrine Surgeon* Mr I Anderson Colorectal & Endocrine Surgeon	Email: outpatientscallcentre@srft.nhs.uk Tel: 0161 206 4100 Fax: 0161 206 1048 Or via Choose & Book Mr Anderson Sec: Tel: 0161 206 5129 Fax: 0161 206 1393 Or via Choose & Book Miss Doran Sec: Tel: 0161 206 5916 Fax: 0161 206 1393
Stepping Hill Hospital	Stockport NHS Foundation Trust	Miss L Ramamurthy ENT Surgeon*	Call Centre: Tel: 0161 419 5901 Fax: 0161 419 5599
Hospital	Name of Trust	Designated Thyroid Surgeons	Referral Contact Point
	<i>alphabetical order</i>	<i>alphabetical order</i>	
Tameside General Hospital	Tameside Hospital NHS Foundation Trust	Mr S Ellenbogen Breast & Endocrine Surgeon Ms Susannah Penney (Locum) Consultant Head and Neck Surgeon/Otolaryngologist	Central Referrals Office Tel: 0161 331 6334 Fax: 0161 331 6339
Trafford General Hospital	Trafford Healthcare NHS Trust	Mr Al-Dabbagh, General & Endocrine Surgeon	Central Booking Office Tel: 0161 934 8601 Fax: 0161 746 2040
Wythenshawe Hospital	†University Hospital of South Manchester NHS Foundation Trust	Mr A Gandhi Endocrine & Breast Surgeon*	Email: smu-tr.callcentre@nhs.net fax: 291-5126 (non-urgent) 291-5127 (HSC205)
Royal Albert Edward Infirmary	Wrightington , Wigan & Leigh NHS Foundation Trust	Mr N Kumar ENT Surgeon * Mr V Pothula ENT Surgeon	RBMS Tel: 01942 773017 Email: wwl-tr.2wwreferrals@nhs.net

*indicates core membership of the Thyroid Cancer MDT

‡Miss Dingle refers to Mersey Thyroid Cancer MDT where she is a core member

† indicates the three Trusts undertaking lateral neck dissection for thyroid cancer